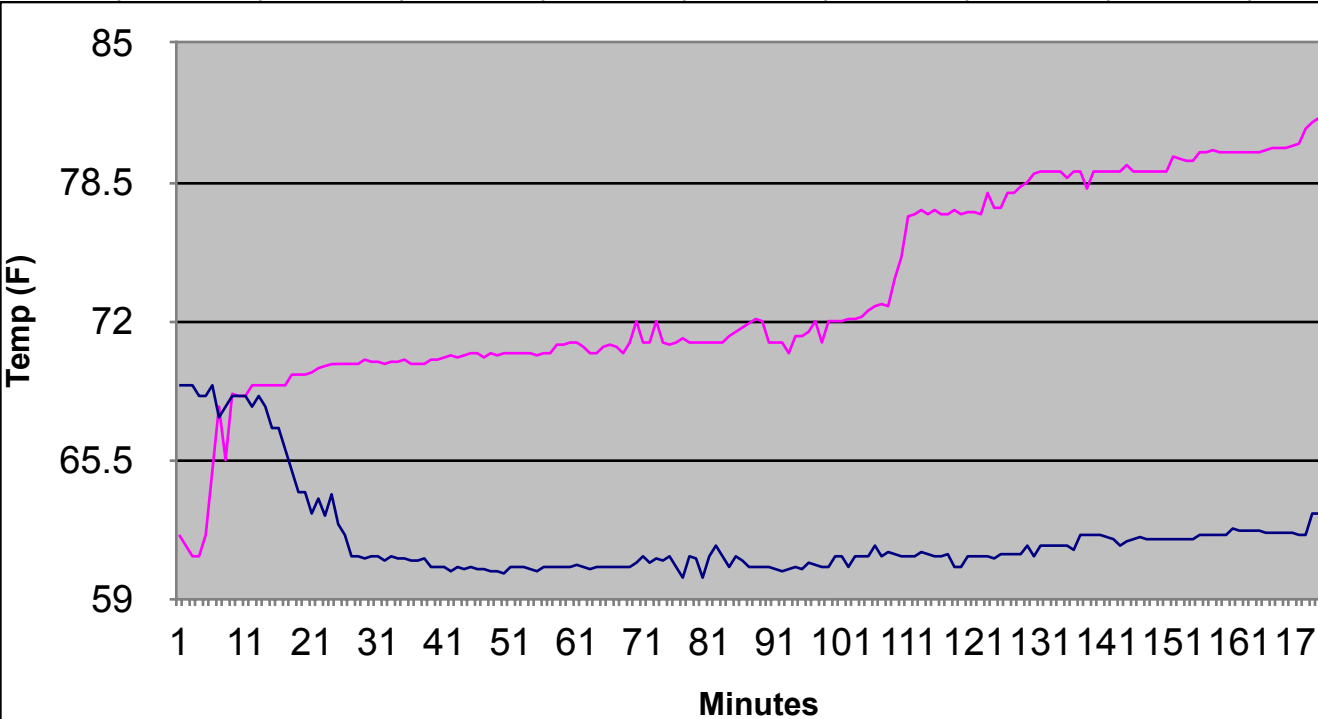


Minute	Temp in land	Temp above ice																		
1	69	62																		
2	69	61.5																		
3	69	61																		
4	68.5	61																		
5	68.5	62																		
6	69	65																		
7	67.5	68																		
8	68	65.5																		
9	68.5	68.6																		
10	68.5	68.5																		
11	68.5	68.5																		
12	68	69																		
13	68.5	69																		
14	68	69																		
15	67	69																		
16	67	69																		
17	66	69																		
18	65	69.5																		
19	64	69.5																		
20	64	69.5																		
21	63	69.6																		
22	63.7	69.8																		
23	62.9	69.9																		
24	63.9	69.99																		
25	62.5	69.999																		
26	62	70																		
27	61	70																		
28	61	70																		
29	60.9	70.2																		
30	61	70.1																		
31	61	70.1																		
32	60.8	70																		



33	61	70.1										
34	60.9	70.1										
35	60.9	70.2										
36	60.8	70										
37	60.8	70										
38	60.9	70										
39	60.5	70.2										
40	60.5	70.2										
41	60.5	70.3										
42	60.3	70.4										
43	60.5	70.3										
44	60.4	70.4										
45	60.5	70.5										
46	60.4	70.5										
47	60.4	70.3										
48	60.3	70.5										
49	60.3	70.4										
50	60.2	70.5										
51	60.5	70.5										
52	60.5	70.5										
53	60.5	70.5										
54	60.4	70.5										
55	60.3	70.4										
56	60.5	70.5										
57	60.5	70.5										
58	60.5	70.9										
59	60.5	70.9										
60	60.5	71										
61	60.6	71										
62	60.5	70.8										
63	60.4	70.5										
64	60.5	70.5										
65	60.5	70.8										
66	60.5	70.9										

67	60.5	70.8											
68	60.5	70.5											
69	60.5	71											
70	60.7	72											
71	61	71											
72	60.7	71											
72	60.9	72											
73	60.8	71											
74	61	70.9											
75	60.5	71											
76	60	71.2											
77	61	71											
78	60.9	71											
79	60	71											
80	61	71											
81	61.5	71											
82	61	71											
83	60.5	71.3											
84	61	71.5											
85	60.8	71.7											
86	60.5	71.9											
87	60.5	72.1											
88	60.5	72											
89	60.5	71											
90	60.4	71											
91	60.3	71											
92	60.4	70.5											
93	60.5	71.3											
94	60.4	71.3											
95	60.7	71.5											
96	60.6	72											
97	60.5	71											
98	60.5	72											
99	61	72											

100	61	72												
101	60.5	72.1												
102	61	72.1												
103	61	72.2												
104	61	72.5												
105	61.5	72.7												
106	61	72.8												
107	61.2	72.7												
108	61.1	74												
109	61	75												
110	61	76.9												
111	61	77												
112	61.2	77.2												
113	61.1	77												
114	61	77.2												
115	61	77												
116	61.1	77												
117	60.5	77.2												
118	60.5	77												
119	61	77.1												
120	61	77.1												
121	61	77												
122	61	78												
123	60.9	77.3												
124	61.1	77.3												
125	61.1	78												
126	61.1	78												
127	61.1	78.3												
128	61.5	78.5												
129	61	78.9												
130	61.5	79												
131	61.5	79												
132	61.5	79												
133	61.5	79												

134	61.5	78.7								
135	61.3	79								
136	62	79								
137	62	78.2								
138	62	79								
139	62	79								
140	61.9	79								
141	61.8	79								
142	61.5	79								
143	61.7	79.3								
144	61.8	79								
145	61.9	79								
146	61.8	79								
147	61.8	79								
148	61.8	79								
149	61.8	79								
150	61.8	79.7								
151	61.8	79.6								
152	61.8	79.5								
153	61.8	79.5								
154	62	79.9								
155	62	79.9								
156	62	80								
157	62	79.9								
158	62	79.9								
159	62.3	79.9								
160	62.2	79.9								
161	62.2	79.9								
162	62.2	79.9								
163	62.2	79.9								
164	62.1	80								
165	62.1	80.1								
166	62.1	80.1								
167	62.1	80.1								

168	62.1	80.2										
169	62	80.3										
170	62	81										
171	63	81.3										
172	63	81.5										
173	63.1	81.7										
174	62.7	81.9										
175	62.7	82										

